

TASKalfa Pro 15000c



Inkjet Full Color Production Printing System



# Innovate & Expand Your Printing



[www.kyoceradocumentsolutions.com](http://www.kyoceradocumentsolutions.com)

# TASKalfa Pro 15000c

A Kyocera Inkjet Full Color Production Printing System.



# Advantages

---



## 1. High Productivity

The TASKalfa Pro's non-stop production system enables continuous 150 ppm printing. Similar to plain paper, 360g/m<sup>2</sup> of thick paper can be printed non-stop for 9,000 pages.

---



## 2. Superb Print Quality

The TASKalfa Pro's inks and ink discharge technology ensure color consistency and high print quality to meet the demands of production print industry.

---



## 3. Wide Media Handling

The TASKalfa Pro 15000c productively prints on a wide variety of media sizes, weights, and types, expanding the range of profitable printing applications.

---



## 4. Optimized In-Line Option

Optimum versatility with feeding, stacking and finishing options let you customize the system that is right for your business.

---



## 5. Selectable Controllers and Applications

Enables efficient production and superior quality with the TASKalfa Pro's controller or with the optional Fiery Print Server.

---



## 6. Exceptionally Easy to Use

Maximizes productivity by letting you replace key components and consumables in moments. The integrated touch panel provides an unified and easy to use interface.

---



## 7. Eco-friendly Advantages

Inkjet printing which does not require heat to fuse toner reduces power consumption significantly. The TASKalfa Pro 15000c reflects our decades-long commitment to sustainable products and manufacturing.

---



## 8. Enhanced Security

The TASKalfa Pro 15000c is equipped with the latest security features such as user authentication, HDD data overwrite and encryption capabilities.

---

# 1 High Productivity



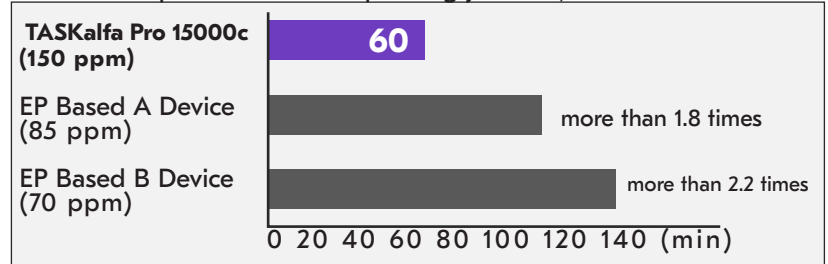
A Significant speed advantage and non-stop production System deliver the productivity for every print environment.

## A Significant Speed Advantage

Kyocera's high speed inkjet technology and large print heads enable fast single pass printing. Our highly reliable paper Transport system combined with a stable and rapid paper supply provides maximum reliability for sustained high volume production.

Victoria can continue printing an hour without any image quality deterioration.

Time to complete continuous printing job of 9,000 sheets



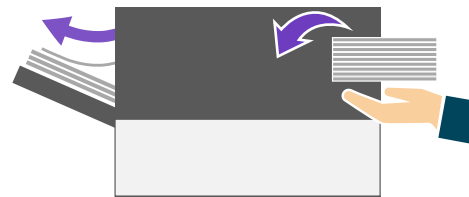
## Non-stop Production

### 1. High Capacity of Paper Input and Output

The mainframe of the TASKalfa Pro accommodates 4,000 sheets. With optional Paper Feeders and 550-sheet Multipurpose Tray, up to 14,310 sheets can be fed into the system. In combination with the 5000-sheet Stacker (up to 2 connected units) and the 4000-sheet Finisher, as well as 500-sheet output capacity from the upper right tray of the mainframe, the TASKalfa Pro 15000c enables up to 15,200 sheet output.

### 2. Load or Unload Paper While Printing

The TASKalfa Pro 15000c lets you load paper while printing. It also lets you unload paper from the 5000-sheet Stacker to a second stacker or tray to ensure continuous output.

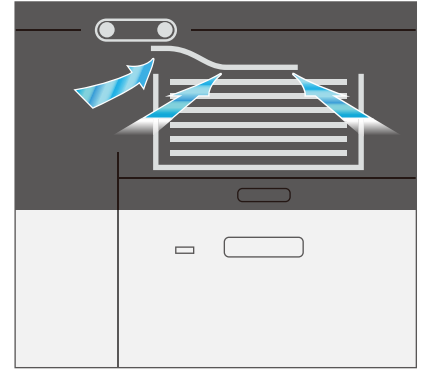


### 3. Sub Ink Tank Supports Continuous Operation

The sub ink tank reservoirs in the ink supply path ensure a continuous supply of ink. The TASKalfa Pro 15000c allows uninterrupted output while changing ink containers during operation.

## Air Pick System

Optional high capacity Paper Feeder adopts a vacuum feed air pick system. The air pick system lifts and separates paper using air flow from the sides and above to ensure reliable paper feeding. This system virtually eliminates multi-sheet feeding while ensuring stable transport for large production runs.



## 220 ipm Single-pass Dual Scanner \*Standard

The standard single-pass, dual scanner enables 220 ipm (300dpi/A4) high speed scanning of both full-color and black/white. Up to 270 sheets can be loaded in the tray, enabling speedy document capture. The multiple feed detection system helps to achieve reliable feed and productivity.



# 2 Superb Print Quality



The TASKalfa Pro 15000c provides color consistency and stability to ensure outstanding quality results to meet the demands of the production print industry.

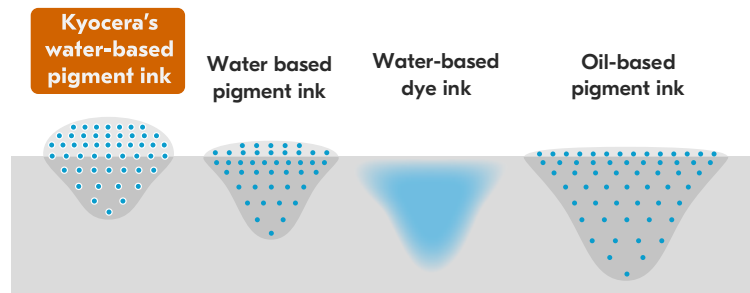
## Consistent Color Quality

Unlike electrophotography, inkjet production printer discharges ink directly into the paper. Inkjet systems are simpler and more reliable than electrophotography as they do not require multiple processes such as charging or exposing a drum or belt, development, transfer and fusing. The TASKalfa Pro 15000c achieves great image stability. Its inkjet head ensures consistent output via stable output density enabled by the exclusive high pigment ratio and high permeability inks developed by Kyocera.



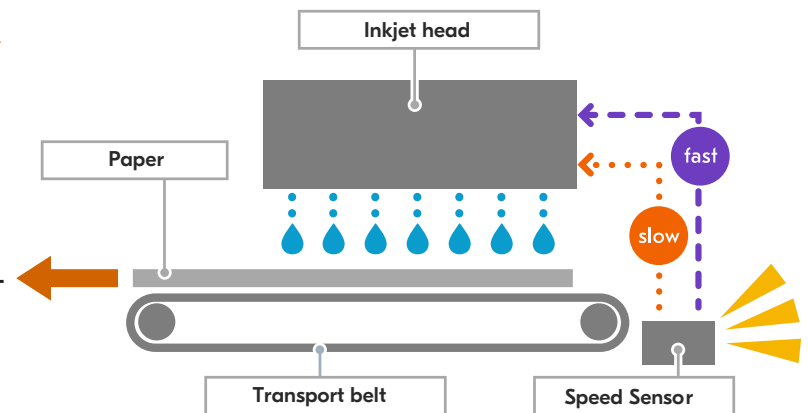
## High Speed Printing Ink

The TASKalfa Pro's inks provide superior light fastness and water resistance. These inks were developed exclusively for the TASKalfa Pro 15000c. Compared to oil-based inks, these inks have a wider color gamut and a better color development. They also prevent feathering as well as ink bleeding.



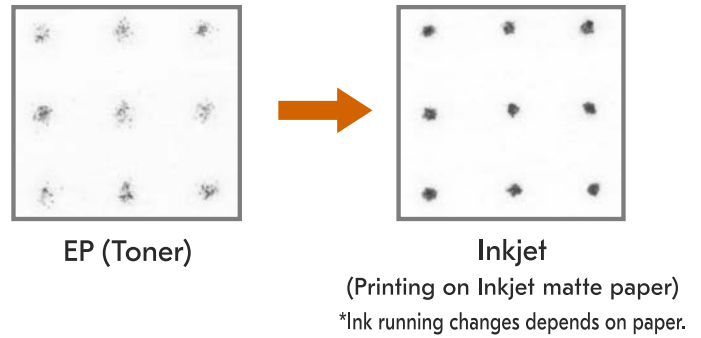
## Dynamic Discharge Timing

The speed sensor detects minor speed changes of the transport belt and automatically adjusts ink discharging frequency to match the speed of the transport belt. This technology ensures accurate dot position on the paper to achieve outstanding image quality and color consistency without color shift.



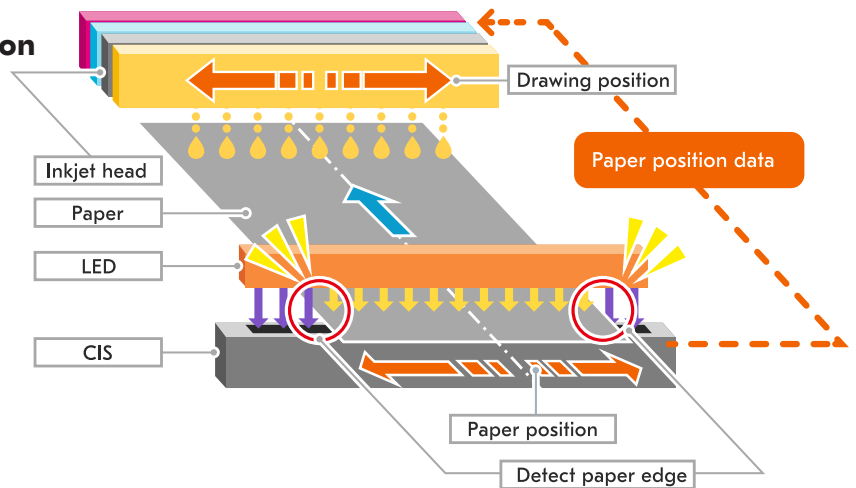
## Excellent Dot Reproduction

Dot reproduction is relatively coarse for toner-based printers, due to the larger dot diameter and the imprecision of electrophotography vs. inkjet printing. Inkjet technology delivers smaller dots for superior reproduction of text, hairlines and gradients. Inkjet printing also achieves smoother color reproduction compared to electrophotography, due to its tone reproduction curves.



## High-precision Front-to-back Registration

The CIS (contact image sensor) senses paper position during duplex printing and sends paper position data to the video controller in real time. The TASKalfa Pro 15000c prints correctly and automatically using paper position data to digitally align the images on both sides of paper. This enables precise front-to-back registration without using any moving parts.



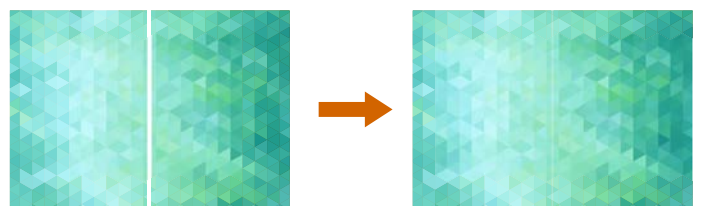
## Automatic Masking

The CIS detects the shape, size and location of punched holes. It automatically masks image data to ensure ink is discharged only on the media. This system also masks image data for folded media to ensure optimal system operation.



## White Line Compensation

If a white line appears on paper, you can use the correction mode to compensate the line. After the mode activated, a clogged or non-discharging nozzle are detected automatically, then nozzles near the clogged or non-discharging nozzle starts ink ejection to minimize white lines.



# 3 Superb Print Quality

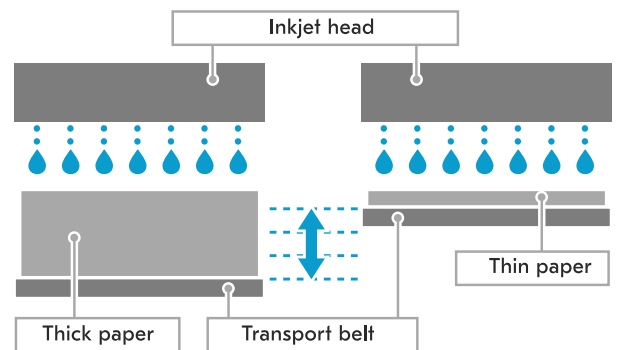


The TASKalfa Pro 15000c productively prints on a wide variety of media sizes, weights and types, expanding the range of profitable printing applications.

## Wide Variety of Media Handling

Throw distance\* adjustment ensures optimal print head placement for a wide variety of media. The TASKalfa Pro 15000c can print on plain, thick, inkjet, inkjet matte tab, emboss and post card as well as envelopes and banners. The TASKalfa Pro 15000c enables reliable printing on paper as thin as Max 360g/m<sup>2</sup>. It also supports an extensive range of standard paper sizes from A6 to SR A3 (4.1" x 5.8" to 13" x 19.2" ). The optional banner tray supports extra-long paper sizes up to 1,220 mm or 48".

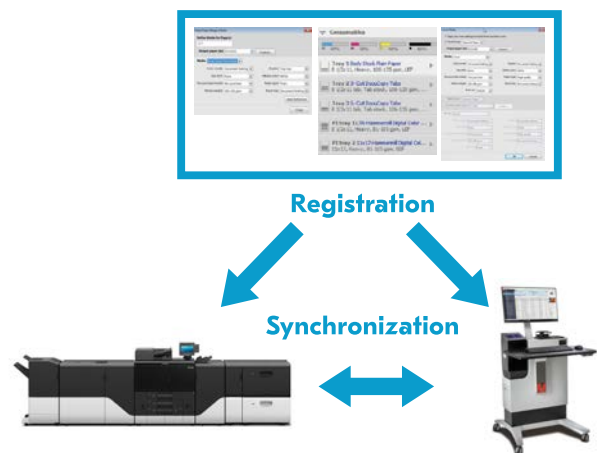
\* Throw distance: The distance between inkjet head and media.



## Paper Catalog

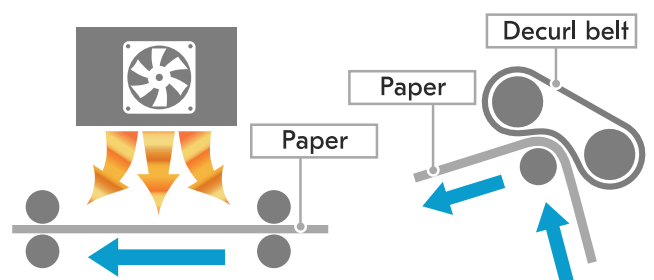
The embedded paper catalog provides Kyocera recommended paper profiles for the TASKalfa Pro 15000c. The paper catalog includes paper information such as type, size, weight and coating. In addition, you can define print engine adjustments for each type of registered paper. You can register printing conditions such as front-end timing adjustment and curl adjustment for each media type in the stock catalog. Paper profile synchronizes with TASKalfa Pro's controller and Fiery Print Server.

\*Registration and deletion of media type under Fiery environment can only be done via Fiery Print Server.



## Optimal Curl Adjustment

The double decurler system using both a mechanical decurler and a warm-air-heating decurler provides optimal curl adjustment for different media types. The DE-9100 (Inverter and Decurler Kit) uses a high speed hot air drying fan and decurl belt to control paper curl for optimal post-processing.





# 4 Optimized In-line Options

Optimum versatility with feeding, stacking and finishing options let you customize the system that is right for your business.



## Optional Input / Feeder

Up to 14,310 sheets \* 1

### 1. Paper Feeder



Total feed capacity of 4,880 sheets using two trays. Configurations with up to 2 Paper Feeders are available. The equipped vacuum feed air pick system lifts and separates paper using air flow from the sides and front to ensure reliable feeding of papers up to 360 g/m<sup>2</sup>.

### 2. Bridge Kit for Paper Feeder



Required when configuring a system with two Paper Feeders.

### 3. 550-sheet Multipurpose Tray Kit



Feed capacity of 550 sheets. Supports paper sizes up to 330 x 700 mm (13" x 27.56") from the multipurpose tray. Supports banner sheets up to 1,220 mm (48") With the optional banner tray.

### 4. Bridge Kit for Main Unit to Paper Feeder



Required when configuring a system with a Paper Feeder.

## Other Option

### 5. Status Indicator Light



The optional status indicator light provides diagnostics via green, yellow and red LED lights that are clearly visible from a distance.

## Optional Output / Finisher

Up to 15,200 sheets \* 2

### 6. Inverter and Decurler Kit



Required when configuring systems with the mainframe and optional output accessories. It dries the media, reducing curling and ensuring consistent output.

### 7. 5000-sheet Stacker



Stacking capacity of up to 5,000 sheets. The roll-away cart neatly and easily transports finished prints. Configurations with up to 2 connected units are available. 1 Roll-away cart is standard with each 5000-sheet Stacker.

### 3. 550-sheet Multipurpose Tray Kit



Required when configuring a system with a 5000-sheet Stacker or 4000-sheet Finisher.

### 9. 4000 - Sheet Finisher



Stacking up to 4,000 sheets. Supports offset stacking and stapling, up to 100 sheets.



10. Folding Kit  
Optional Finisher module enables inline finishing.  
-Saddle Stitch  
-Bi-Fold  
-Tri-Fold

11. Hole Punch Kit  
Optional Finisher module enables 2 or 3 hole punching.

12. Banner Tray  
Optional Finisher module  
Paper Output Tray for Banner.

\*1 Incl. Standard Paper Feed Tray  
\*2 Incl. Standard Paper Output Tray

# 5 Selectable Controllers And Applications

Enables efficient production and superior quality with the TASKalfa Pro's controller or with the optional Fiery Print Server.

## TASKalfa Pro's Controller \*Standard

### 1. Native PDF Processing

Kyocera's unique High Speed PDF Processing technology directly processes PDF files without conversion. PDF/X and PDF/VT files are processed efficiently to ensure high productivity.

### 2. Command Center RX

Command Center RX (CCRX) makes daily operations quick and simple. CCRX helps users to look at important job and printer information such as ink levels, paper availability and access device settings via web browser.

### 3. Variable Data Printing

The TASKalfa Pro's controller supports concurrent processing and printing of PDF/vt 1.0 and PPML 2.0 jobs for optimal productivity when processing large variable jobs.

\*Below is the available application software vendors related VDP job making.

Objectif Lune (Vendor Home Page: <https://www.objectiflune.com/en/>)

PrintshopMail Connect supports to do imposition and VDP. PlanetPress Connect also supports same features, it automates workflow and streamlines transaction and trans promo printing.

Quadient (Vendor Home Page: <https://www.quadient.com/>)

Quadient Inspire supports making layout e.g., imposition and VDP. It's intuitive and easy-use interface also support to automate workflow. It also supports Transactional and Promotional printing e.g., Transaction, Direct mail and Flyer.





### 1. Fiery Print Server

Fiery's unique combination of hardware and software handles high-resolution jobs at high speed. Since sending data to the printing machine is also processed at high speed, productivity and working efficiency are maintained.



### 2. Adobe PDF Print Engine

Supports APPE 4.4, a high-performance printing environment. Processing PDF job at high speed without converting it to Postscript increase workflow efficiency.

### 3. Fiery Workflow Suite

Improves work efficiency by automating repetitive work. Supports JDF and enables connection with 3rd vendor products. Unifies various Fiery products to provide high value-added services as a whole.

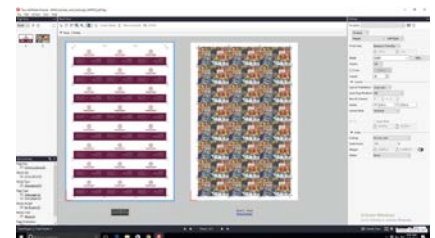


### 4. EFI Digital Storefront Web-to-Print

Automates the flow of sending client jobs to the appropriate printing machine. Simplifies online ordering via website, shortens delivery time and lower the cost.

### 5. Fiery Impose / Compose / Job Flow

These MakeReady software streamline labor-intensive print preparation tasks. Responds to diverse customer needs such as scanning, page numbering, chapter creation, layout creation, as well as imposition of VDP printing.



### 6. Fiery Variable Data Printing

Supports most industry standards such as Fiery FreeForm™, PPML 2.0 | 2.5 | 3.0, PDF/ VT-1 and 2, Creo VPS, Xerox VIPP. Enables RIP processing of the VDP language at high speed.

### 7. Fiery Color Profiler Suite

Offers comprehensive support for color management including creation, editing and management of ICC compliant color profiles and color matching of multiple printing machines.



# 6 Exceptionally Easy to Use



Maximizes productivity by letting you replace key components and consumables in moments.

## Short Maintenance Time

The TASKalfa Pro 15000c requires minimal maintenance. The TASKalfa Pro 15000c is designed to make maintenance quick and easy for the press operator. Daily calibration is not required to achieve consistent color.

## Full Front Access

Full front access to all key machine components ensures quick and easy maintenance and minimum downtime. All consumables are user replaceable from the front of the machine.



## Intuitive Operation

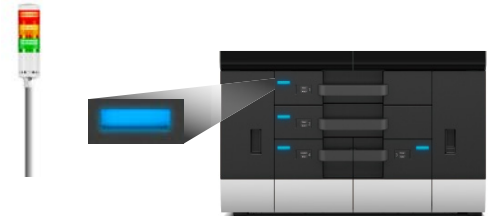
The standard touch panel (9") provides an unified and simple to use interface for the most important press and job management functions.



## Easy to Notice Indicator Functions

### Status Indicator Light

The optional status indicator light provides diagnostics via green, yellow, red LED lights that are clearly visible from a distance and sound.



### Cassette Status Indicator

The cassette status indicator lets the operator know which cassettes are in use and which are empty.

### Paper Jam Solving Lamp

If paper jam occurs, LED lamps at the jammed part would turn on. Then a flash lamp indicates where you should start to solve the jam problem.



## Professional Settings

The TASKalfa Pro 15000c provides Professional Settings for minimizing machine down time. After completing training, trained users can perform proactive maintenance and replace key components.

Kyocera provides a Professional Settings training program and a Professional Settings service manual for Pro users\*1

\*1 Users who are allowed to execute machine maintenance on the condition that the user completes vendor-designated training sessions.

# 7 Eco-friendly Advantages



The TAskalfa Pro 15000c reflects our decades-long commitment to sustainable products and manufacturing. .

## Low Power Consumption

Electrophotography requires a lot of energy whereas inkjet printing, which does not require heat to fuse toner, reduces power consumption significantly.

## Low Emission

Low temperature operation and water-based pigment inks reduce VOC (Volatile Organic Compounds) and UFP (Ultrafine Particles).

## Fewer Replacement Parts

Electrophotography requires consumables, such as developer and drums or belts which need to be replaced on a regular basis. By contrast, inkjet's direct discharging printing does not require consumable parts which substantially reduces waste.

# 8 Enhanced Security



The TAskalfa Pro 15000c is equipped with various security features.

## I/F Block

Blocks unauthorized access routes to the device and prevents information leakage in the device by closing unused network ports and USB ports.

## User Authentication Correspondence

Blocks unauthorized use, as well as unauthorized access of the device, and prevents information leakage in the device by identifying the user who operates..

## Enhanced Security with Data Encryption

Enables automatic overwriting and erasing of copying, scanning, and printing data remaining on the hard disk or SSD. Prevents the original information from being decrypted, even if the data is stolen due to the unauthorized access by encrypting and writing the data.

# TASKalfa Pro 15000c Suggested Configurations

## Standard Model

Main Unit  
Optional Input  
PF-9100 Paper Feeder  
AK-9110 Bridge Kit for Main Unit to Paper Feeder  
Optional Output  
DE-9100 Inverter and Decurler Kit  
DF-9100 4000-sheet Finisher



## Base Model

Main Unit  
Optional Input  
DE-9100 Inverter and Decurler Kit  
DF-9100 4000-sheet Finisher



## Printing Service Provider Model 1

Main Unit  
Optional Input  
PF-9100 Paper Feeder  
AK-9110 Bridge Kit for Main Unit to Paper Feeder  
Optional Output  
DE-9100 Inverter and Decurler Kit  
ST-9100 5000-sheet Stacker



## Printing Service Provider Model 2

Main Unit  
Optional Input  
PF-9100 Paper Feeder  
AK-9110 Bridge Kit for Main Unit to Paper Feeder  
Optional Output  
DE-9100 Inverter and Decurler Kit  
ST-9100 5000-sheet Stacker  
AK-9120 Bridge Kit for Stacker to Finisher  
DF-9100 4000-sheet Finisher



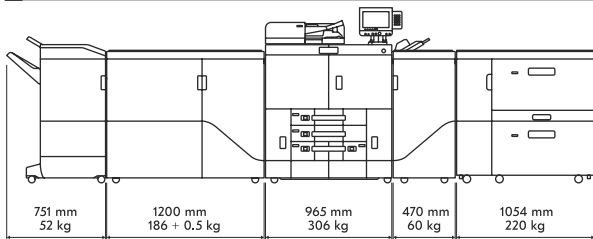
## Full System Model

Main Unit  
Optional Input  
PF-9100 Paper Feeder x 2 units  
AK-9130 Bridge Kit for Paper Feeder  
AK-9110 Bridge Kit for Main Unit to Paper Feeder  
PF-9110 550-sheet Multipurpose Tray Kit  
AK-9140 Attachment kit for PF-9110  
Optional Output  
DE-9100 Inverter and Decurler Kit  
ST-9100 5000-sheet Stacker x 2 units  
AK-9120 Bridge Kit for Stacker to Finisher  
DF-9100 4000-sheet Finisher  
DE-9100 Inverter and Decurler Kit  
DF-9100 4000-sheet Finisher

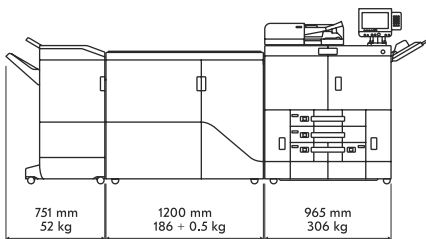


# TASKalfa Pro 15000c Dimensions

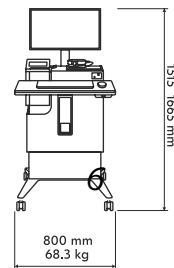
## Standard Model



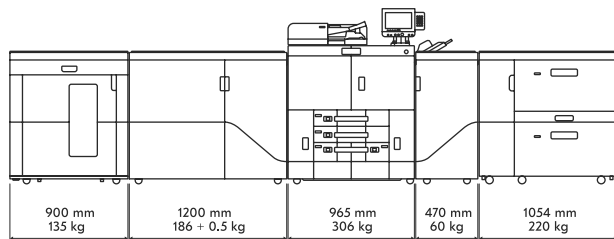
## Base Model



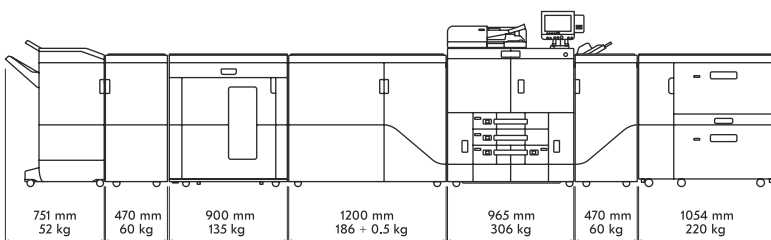
## Fiery Print Server



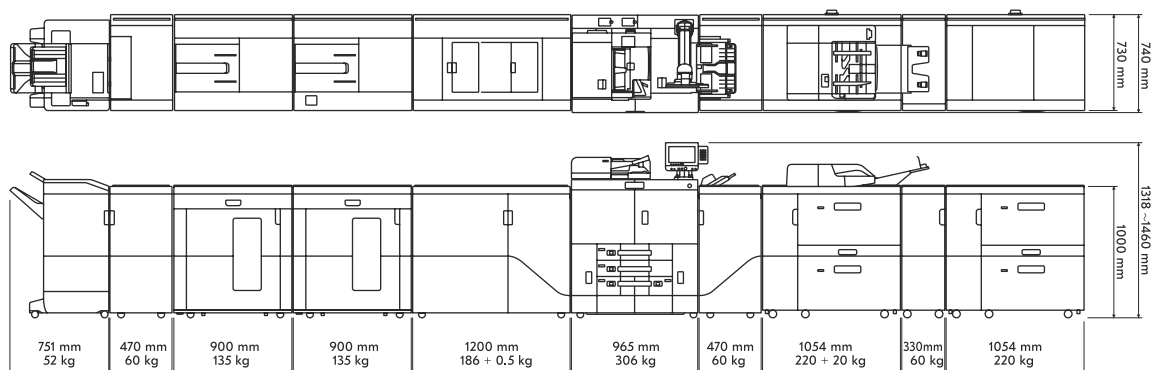
## Printing Service Provider Model 1



## Printing Service Provider Model 2



## Full System Model



# TASKalfa Pro 15000c Specifications

## BASIC SPECIFICATIONS

KYOCERA High Speed Inkjet Color Multifunctional

**Engine speed (Pages per minute):**

Color/Black – A4: 150ppm, Letter: 146 ppm, Legal/

B4: 98 ppm, A3: 88ppm, Ledger: 86 ppm, SRA3:

75ppm (print only), 12" x 18": 74 ppm (print only)

**Warm-up time:** 120 seconds or Less (Power On),

[W/DE-9100: 15 minutes or less]

**First Page Out:**

Copy: 5.0 Seconds or Less Black, 5.0 Seconds or Less Color.

Print: 5.5 Seconds or Less Black, 5.5 Seconds or Less Color

**Resolution:** 600 x 600 dpi; 600 x 1200 dpi

**Memory / Hard Disk Drive:** 4.5 GB RAM/

32 GB SSD / 1 TB HDD Standard

**Duplex:** Standard Stackless Duplex Supports A5/

Statement to SRA3/12" x 18", 60 – 300gsm

**Standard Output Tray:** A5R/Statement – 13" x 19.2"/

500 Sheets, (A6R : Right output tray)

**Typical Electricity Consumption (TEC):**

6.3 kWh/week [120V/220V]

**Integrated accounting:**

Dimensions (W x D x H): 965 mm x 740 mm x 1220 mm.

**Weight:** 308 kg or less.

**Maximum Monthly Duty Cycle:** 1,000,000 Pages per Month

## PAPER SUPPLY

**Standard Paper Source:** Dual 500 Sheet Trays, Dual 1,500

Sheet Trays, 150 Sheet MPT, Auto Selection / Switching

**Optional Paper Sources:** Dual 2,440 Sheet (PF-9100)

Max 2 units 550 Sheet Multi-Media Paper Feeder (PF-9110)

**Paper Capacity:** Standard: 4,150 Sheets; Maximum: 14,310 Sheets

**Paper Size:** Tray: A5/5.5" x 8.5" – 12" x 18";

MPT: A6/5.5" x 8.5" – 13" x 19.2"

**Paper Weight:** Trays / (MPT) : Max 360gsm / (Max 300gsm)

**Input Materials:** Plain paper / II plain paper /

II matte paper / Thick paper / Postcard / Tab

paper / Envelope / Banner paper / II media

## COPY FUNCTIONS

**Max. original size:** A3/Ledger

**Continuous copying:** 1 – 9,999

**Zoom range:** 25 – 400 % in 1% steps

**Preset magnification ratios:** 5 Reductions/5 Enlargements

**Exposure mode:** Auto, manual: 16 steps

**Image adjustments:** Text + Photo, Photo, Text, Map, Printed

document

**Features:** Scan-once-copy-many, electronic sort, 2in1, 4in1, image

repeat, page numbering, cover mode. booklet copy, interrupt

copy, form overlay, margin shift, auto cassette change, Skip blank

page, ID card copy

## SCAN FUNCTIONS

**Functionality:** Scan-to-email, Scan-to-FTP, Scan-to-SMB 3.0,

Scan-to-USB Host, Scan-to-box, Network TWIN, WSD scan

(WIA Driver Network)

**Scan speed:** (A4, 300 dpi, Dual Scan) 220 images per minute;

(A4, 300 dpi, Simplex Scan) 120 images per minute

**Scan resolution:** 600 x 600 dpi, 400 x 400 dpi, 300 x 300 dpi,

200 x 400 dpi, 200 x 200 dpi, 200 x 100 dpi; 256 greyscales per

colour

**Max. scan size:** A3, Ledger, Banner up to 2,200 mm

**Original recognition:** Text, photo, text + photo, light text/

fine line, optimised for OCR

**File types:** TIFF, PDF, PDF/A, JPEG, Open XPS, Encrypted PDF,

High compression PDF, PDF/A-1a/b, PDF/A-2a/b/u,

**Duplex:** Colour scan, Auto Colour Select, integrated

address book, Active Directory support, encrypted data

transfer, multi send (e-mail, fax, SMB/FTP folder, print)

at once, Blank page skip, Specified colour removal

## OPTIONAL LARGE PAPER CAPACITY TRAY PF-9100

**Dimensions (W x D x H):** 330 x 730 x 1000 mm

**Weight:** 60kg or less

**Power Consumption:** Less than 860 W

**Paper Size:** A6/5.5" x 8.5" – 13" x 19.2"

**Paper Capacity:** 4,880 sheets (2,440 sheets per tray)

**Paper Weight:** 56 – 360gsm

## OPTIONAL LARGE CAPACITY STACKER ST-9100

**Dimensions (W x D x H):** 900x 730 x 1000 mm

**Weight:** 120kg or less

**Power Consumption:** Less than 144 W

**Paper Size:** 330.2 x 487.9 mm(13x19.2) – A6R/Postcard"

**Paper Capacity:** 5,000 sheets

**Paper Weight:** 56 – 360gsm

## PRINT SPECIFICATIONS

**Standard Controller:** QorIQ T1042 (Quad Core) / 1.2GHz

**PDLs / Emulations:** PCL6 (PCL-XL / PCL5c),

KPDL3 (PS3), PDF, OpenXPS, XPS, PPML

**Print Resolution:** Up to 600 x 1200 dpi

**Fonts:** 136 KPDL3, 93 PCL6, 8 Windows Vista, 1 Bitmap.

**OS Compatibility:** Windows: XP/Vista/7/8/8.1/10/Server

2003/Server 2008/Server 2008 R2/ Server 2012/Server

2012 R2; Novell NetWare 3.x/4.x/5.x/6.x; Mac Sun OS 4.1.x;

Solaris 2.x; AIX; HP-UX; (LPR)OS 10.x; AirPrint Enabled.

**Interfaces:** Standard: 10/100/1000BaseTX,

Hi-Speed USB 2.0, 4 USB Host Interfaces

**Network Print and Supported Protocols:** TCP/IP, FTP, LPR,

NetBEUI, IPv4, IPv6, IPsec, SSL, HTTP, LPD, IPP, RawPort, LLTD,

SNTP, DHCP, SMTP, POP3, DNS, SNMPv1/v2, WSD Scan/Print

**Drivers:** KX Driver

## OPTIONAL FIERY CONTROLLER PRINTING SYSTEM 50

**Fiery System Version:** Fiery FS300 Pro

**Configuration:** External

**Memory:** 16GB (8GB x 2)

**CPU:** Intel I7-6700 (3.4 GHz up to 40 GHz with turbo)

**HDD:** 1 TB SATA

## Fiery Included Options

**Fiery Spot On, Fiery Hot Folders, Virtual Printers, Fiery**

**Go, PaperCut Compatibility, Paper Catalog,**

**Fiery JobFlow Base, Fiery Calibrate**

## CONSUMABLES

Average continuous Ink yield in accordance with

5% coverage A4.

**IK-7115K, IK-7115C, IK-7115M, IK-7115Y**

**Staples:** SH-10 for BF-9110, SH-14 for DF-7130

## ENHANCEMENTS

**PF-9100:** Vacuum Feed Paper Feeder

**PF-9110:** Multi Bypass Tray

**DE-9100:** Drying & Decurl Unit

**ST-9100:** High Capacity Stacker

**DF-9100:** Document Finisher

**BF-9110:** Booklet Finisher

**SL-9100:** Status Indicator Light

**PH-7C:** Hole Punch

**AK-9110:** Relay Unit between Paper Feeder and Printer

**AK-9120:** Relay Unit between Stacker and Finisher

**AK-9130:** Relay unit between PF-9100 & 2nd PF-9100

**AK-9140:** Relay kit for PF-9110

When printing in large quantities, reliability is just as important as speed. The TASKalfa Pro 15000c combines both to help organisations maximise productivity while minimising operating costs and energy consumption. With the personalisation capabilities of digital and a variety of finishing options, our most powerful device yet has everything you need to cover your production printing needs.



KYOCERA Document Solutions Partner

SEPTEMBER2020DSTASKALFAPRO15000C/VER2.0

KYOCERA Document Solutions Europe B.V.  
Bloemlaan 4, 2132 NP Hoofddorp, The Netherlands  
Tel +31 (0) 20-654-0000 – Fax +31 (0) 20-653-1256



kyoceradocumentsolutions.eu

Kyocera Document Solutions does not warrant that any specifications mentioned will be error-free. Specifications are subject to change without notice. Information is correct at time of going to press. All other brand and product names may be registered trademarks or trademarks of their respective holders and are hereby acknowledged.